

Onondaga Lake Database - Trend Analysis & Outlier Screening
Onondaga County Department of Water Environment Protection

Version 1.1

Time Series Analysis

Select Station: ADAMS, BIRMG, DORWIN, ELLIOTT, HANATHA, KIRKPAT, NETCO, NORTH_L, NORTH_LL, OUTLET2, OUTLET3, PARK, RYAN, SOUTH_L, SOUTH_LL, SPENCER, TRUBA, VELASKO

Select Variable: FCOL, FCOL2, FCOL3, FCOL4, FCOL5, FCOL6, FCOL7, FCOL8, FCOL9, FCOL10, FCOL11, FCOL12, FCOL13, FCOL14, FCOL15, FCOL16, FCOL17, FCOL18, FCOL19, FCOL20, FCOL21, FCOL22, FCOL23, FCOL24, FCOL25, FCOL26, FCOL27, FCOL28, FCOL29, FCOL30, FCOL31, FCOL32, FCOL33, FCOL34, FCOL35, FCOL36, FCOL37, FCOL38, FCOL39, FCOL40, FCOL41, FCOL42, FCOL43, FCOL44, FCOL45, FCOL46, FCOL47, FCOL48, FCOL49, FCOL50, FCOL51, FCOL52, FCOL53, FCOL54, FCOL55, FCOL56, FCOL57, FCOL58, FCOL59, FCOL60, FCOL61, FCOL62, FCOL63, FCOL64, FCOL65, FCOL66, FCOL67, FCOL68, FCOL69, FCOL70, FCOL71, FCOL72, FCOL73, FCOL74, FCOL75, FCOL76, FCOL77, FCOL78, FCOL79, FCOL80, FCOL81, FCOL82, FCOL83, FCOL84, FCOL85, FCOL86, FCOL87, FCOL88, FCOL89, FCOL90, FCOL91, FCOL92, FCOL93, FCOL94, FCOL95, FCOL96, FCOL97, FCOL98, FCOL99, FCOL100

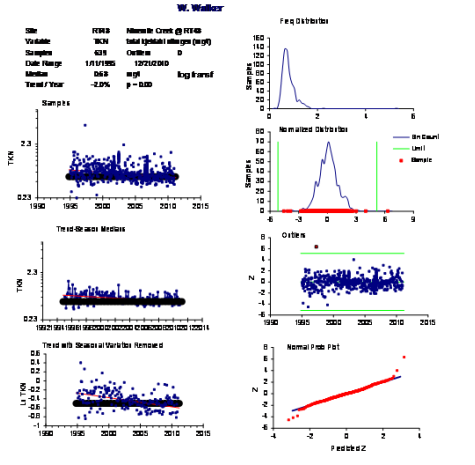
Run For: Selected Variable & Site, Selected Variable & Each Site, Selected Site & Each Variable, All Sites & All Variables

Transformer: None, Linear, Logarithmic

Options: Publish Batch Results, Include Outliers in Trend Analysis, Plot Series with Outliers Only

Info: Total: 18, Included in Batch: 7, Sites: 18, Variables: 37

Click Here for General Help on Database
Click Here for Main Database Menu



Version 4/9/2012

Time Series Analysis for Upper Klamath Lake Database

Select Station: CP, ER, HL, NB, NW, SB, TP, TP-SAP, TP-SAP-CHLA, TP-SAP-TP, TP-SAP-TP2, TP-SAP-TP3, TP-SAP-TP4, TP-SAP-TP5, TP-SAP-TP6, TP-SAP-TP7, TP-SAP-TP8, TP-SAP-TP9, TP-SAP-TP10, TP-SAP-TP11, TP-SAP-TP12, TP-SAP-TP13, TP-SAP-TP14, TP-SAP-TP15, TP-SAP-TP16, TP-SAP-TP17, TP-SAP-TP18, TP-SAP-TP19, TP-SAP-TP20, TP-SAP-TP21, TP-SAP-TP22, TP-SAP-TP23, TP-SAP-TP24, TP-SAP-TP25, TP-SAP-TP26, TP-SAP-TP27, TP-SAP-TP28, TP-SAP-TP29, TP-SAP-TP30, TP-SAP-TP31, TP-SAP-TP32, TP-SAP-TP33, TP-SAP-TP34, TP-SAP-TP35, TP-SAP-TP36, TP-SAP-TP37, TP-SAP-TP38, TP-SAP-TP39, TP-SAP-TP40, TP-SAP-TP41, TP-SAP-TP42, TP-SAP-TP43, TP-SAP-TP44, TP-SAP-TP45, TP-SAP-TP46, TP-SAP-TP47, TP-SAP-TP48, TP-SAP-TP49, TP-SAP-TP50, TP-SAP-TP51, TP-SAP-TP52, TP-SAP-TP53, TP-SAP-TP54, TP-SAP-TP55, TP-SAP-TP56, TP-SAP-TP57, TP-SAP-TP58, TP-SAP-TP59, TP-SAP-TP60, TP-SAP-TP61, TP-SAP-TP62, TP-SAP-TP63, TP-SAP-TP64, TP-SAP-TP65, TP-SAP-TP66, TP-SAP-TP67, TP-SAP-TP68, TP-SAP-TP69, TP-SAP-TP70, TP-SAP-TP71, TP-SAP-TP72, TP-SAP-TP73, TP-SAP-TP74, TP-SAP-TP75, TP-SAP-TP76, TP-SAP-TP77, TP-SAP-TP78, TP-SAP-TP79, TP-SAP-TP80, TP-SAP-TP81, TP-SAP-TP82, TP-SAP-TP83, TP-SAP-TP84, TP-SAP-TP85, TP-SAP-TP86, TP-SAP-TP87, TP-SAP-TP88, TP-SAP-TP89, TP-SAP-TP90, TP-SAP-TP91, TP-SAP-TP92, TP-SAP-TP93, TP-SAP-TP94, TP-SAP-TP95, TP-SAP-TP96, TP-SAP-TP97, TP-SAP-TP98, TP-SAP-TP99, TP-SAP-TP100

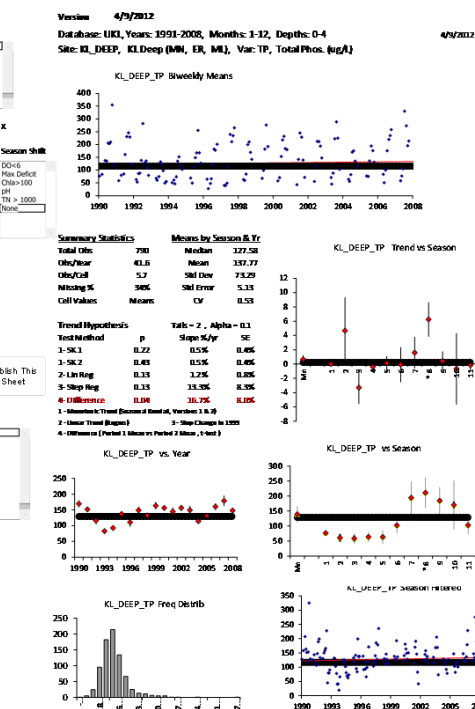
Run For: Selected Variable & Site, Selected Variable & Each Site, Selected Site & Each Variable, All Sites & All Variables

Transformer: None, Linear, Logarithmic

Options: Publish Batch Results, Include Outliers in Trend Analysis, Plot Series with Outliers Only

Info: Total: 71, Included in Batch: 38, Sites: 71, Variables: 20

Click Here for General Help on Database
Click Here for Main Database Menu



Time Series Analysis for Everglades Monitoring Network

Select Station: ADMISS, G13, G14, G15, G16, G17, G18, G19, G20, G21, G22, G23, G24, G25, G26, G27, G28, G29, G30, G31, G32, G33, G34, G35, G36, G37, G38, G39, G40, G41, G42, G43, G44, G45, G46, G47, G48, G49, G50, G51, G52, G53, G54, G55, G56, G57, G58, G59, G60, G61, G62, G63, G64, G65, G66, G67, G68, G69, G70, G71, G72, G73, G74, G75, G76, G77, G78, G79, G80, G81, G82, G83, G84, G85, G86, G87, G88, G89, G90, G91, G92, G93, G94, G95, G96, G97, G98, G99, G100

Select Variable: CA, CA2, CA3, CA4, CA5, CA6, CA7, CA8, CA9, CA10, CA11, CA12, CA13, CA14, CA15, CA16, CA17, CA18, CA19, CA20, CA21, CA22, CA23, CA24, CA25, CA26, CA27, CA28, CA29, CA30, CA31, CA32, CA33, CA34, CA35, CA36, CA37, CA38, CA39, CA40, CA41, CA42, CA43, CA44, CA45, CA46, CA47, CA48, CA49, CA50, CA51, CA52, CA53, CA54, CA55, CA56, CA57, CA58, CA59, CA60, CA61, CA62, CA63, CA64, CA65, CA66, CA67, CA68, CA69, CA70, CA71, CA72, CA73, CA74, CA75, CA76, CA77, CA78, CA79, CA80, CA81, CA82, CA83, CA84, CA85, CA86, CA87, CA88, CA89, CA90, CA91, CA92, CA93, CA94, CA95, CA96, CA97, CA98, CA99, CA100

Run For: Selected Variable & Site, Selected Variable & Each Site, Selected Site & Each Variable, All Sites & All Variables

Transformer: None, Linear, Logarithmic

Options: Publish Batch Results, Include Outliers in Trend Analysis, Plot Series with Outliers Only

Info: Total: 307, Included in Batch: 14, Sites: 307, Variables: 14

Click Here for General Help on Database
Click Here for Main Database Menu

