

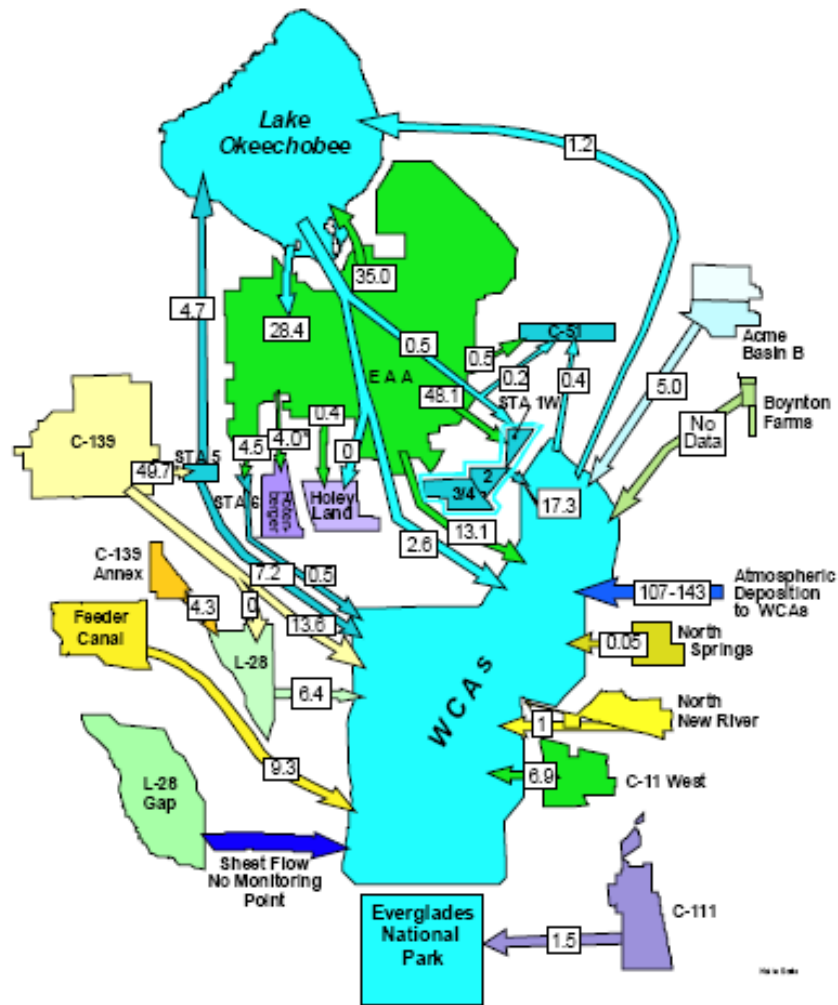
Regional TP Budgets CERP / NRC Meeting

William W. Walker, Jr., Ph.D.
Environmental Engineer
<http://www.wwwalker.net>

Prepared for
US Department of the Interior

June 8, 2009

Schematic of Total Phosphorus Inflows to WCAs from Various SFWMD Controlled Structures - WY02



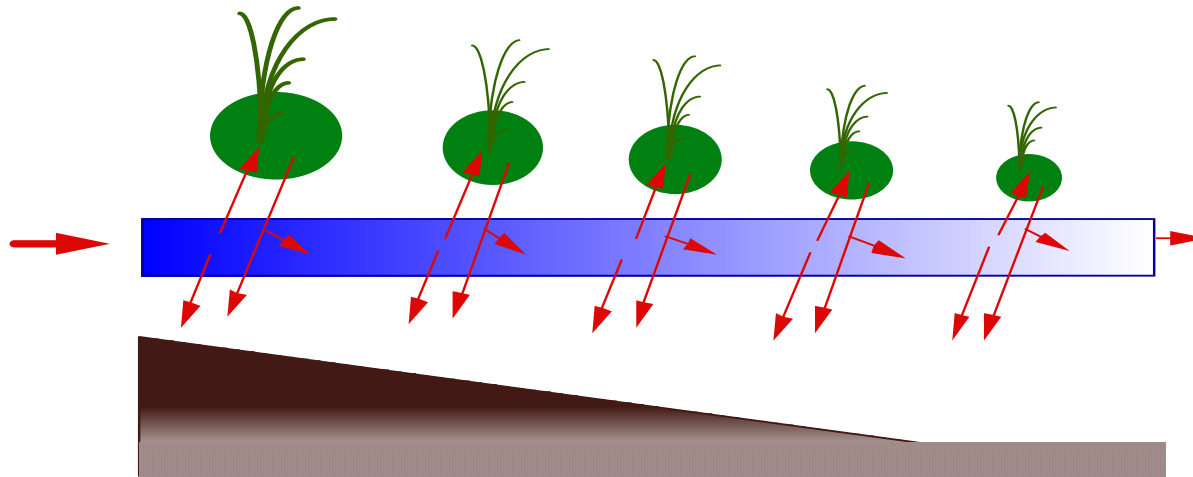
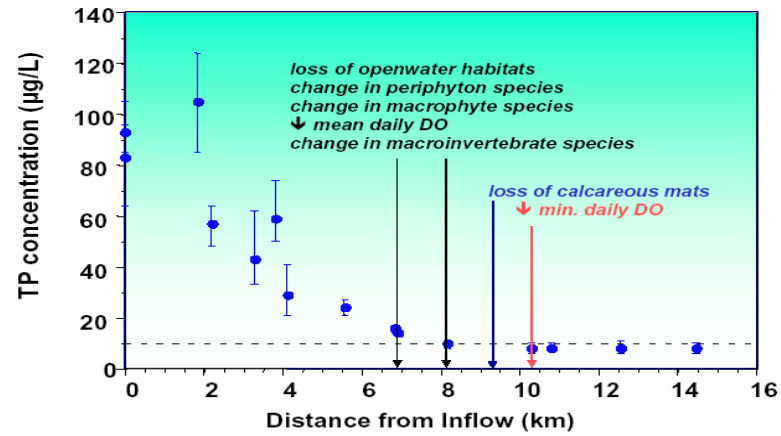
Values presented are metric tons, 1000 kg = 1 metric ton, 2205 lb = 1 metric ton
Refer to accompanying table for detailed break down

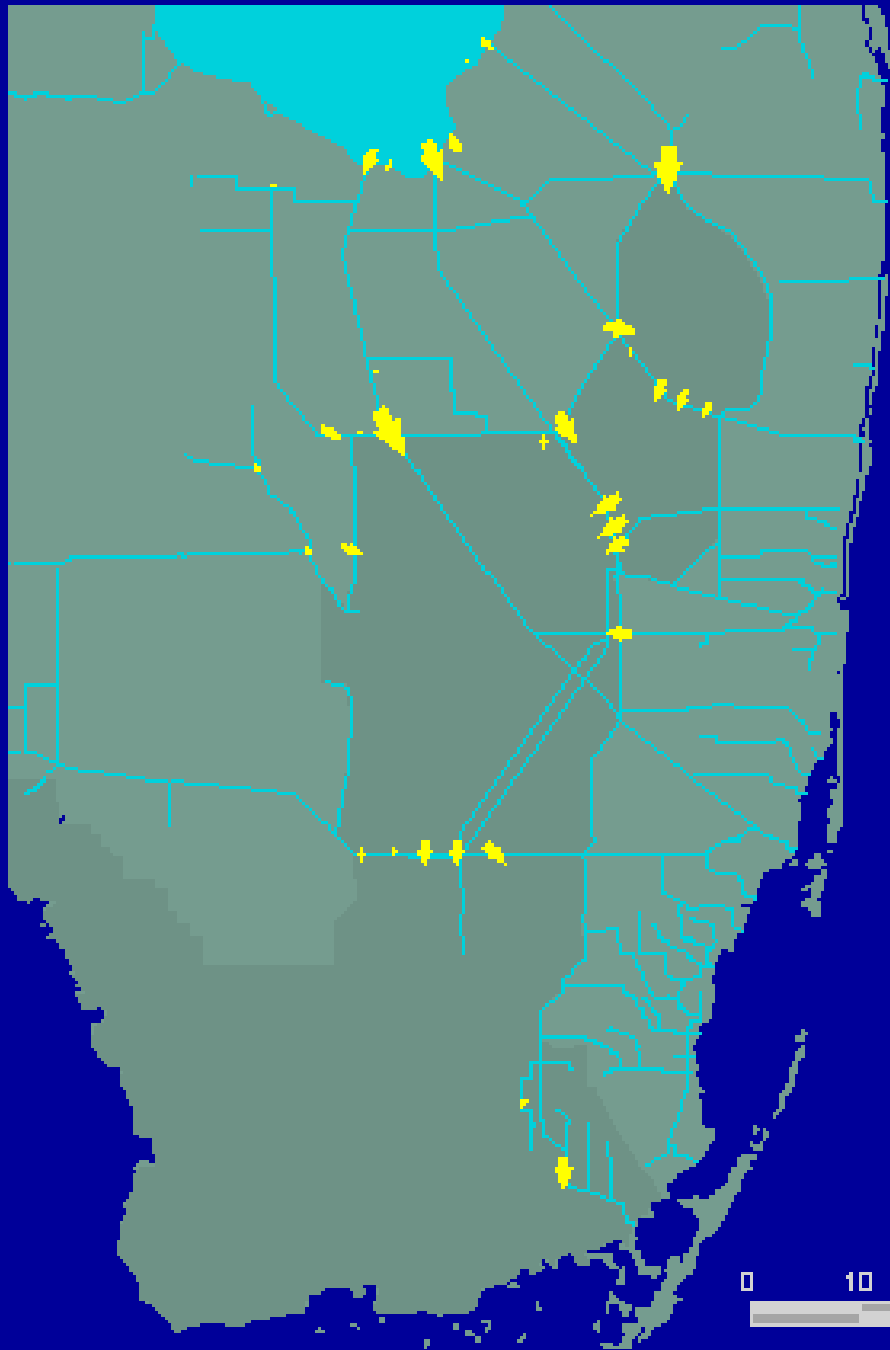
- NOTE:
1. STAs 1W, 2, 5 and 6 were operational in Water Year 2002.
 2. Atmospheric Deposition P Loads to the WCAs are based on Redfield Manuscript EMA 403, "Atmospheric Deposition Phosphorus: Concepts, Constraints and Published Deposition Rates for Ecosystem Management", Page 21, SFWMD, Feb 2002.
 3. Total Phosphorus loads into STAs 1W and 2 (from EAA and Lake) and into WCAs (from STAs 1W and 2) have been aggregated. STA 1W discharges to WCA 1 (Refuge) and STA 2 discharges into WCA 2A. * Load to Rotenberger comes from STAs via EAA Canal

Regional TP Budget Water Year 2003 SFER

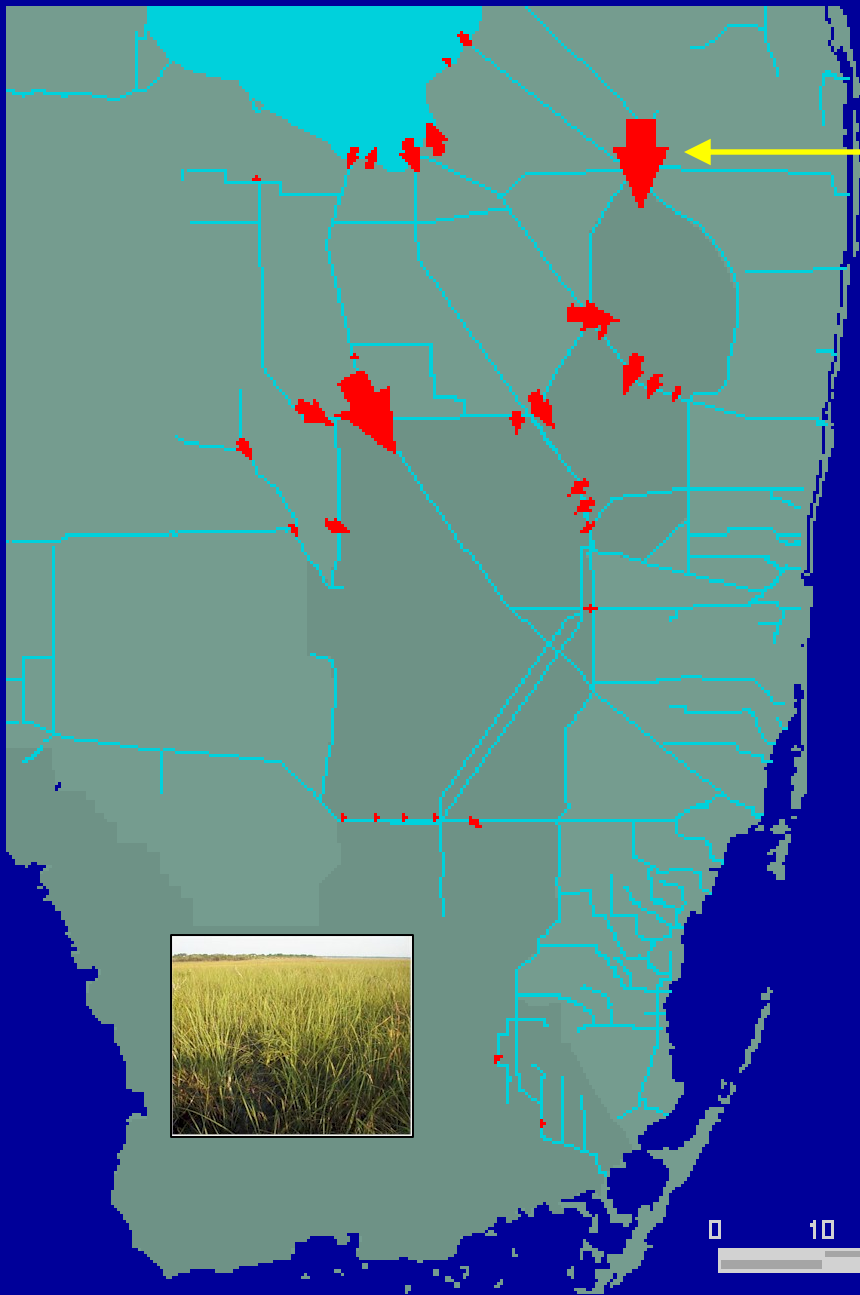
Relevant Spatial Scale for Mass Balances P Gradient Downstream of Inflows

Ecological Changes along the WCA-2A Gradient



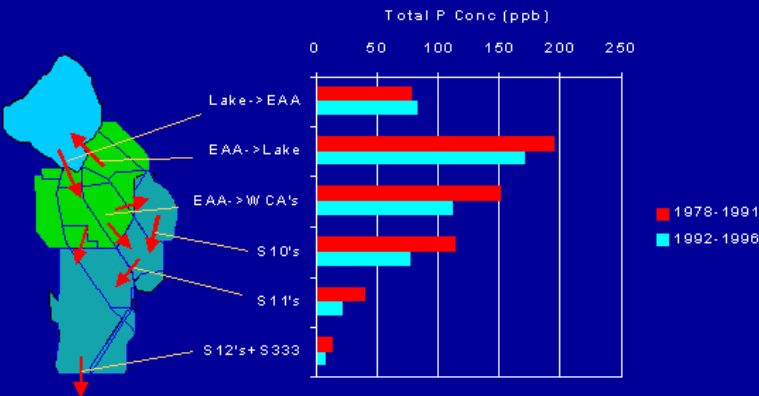


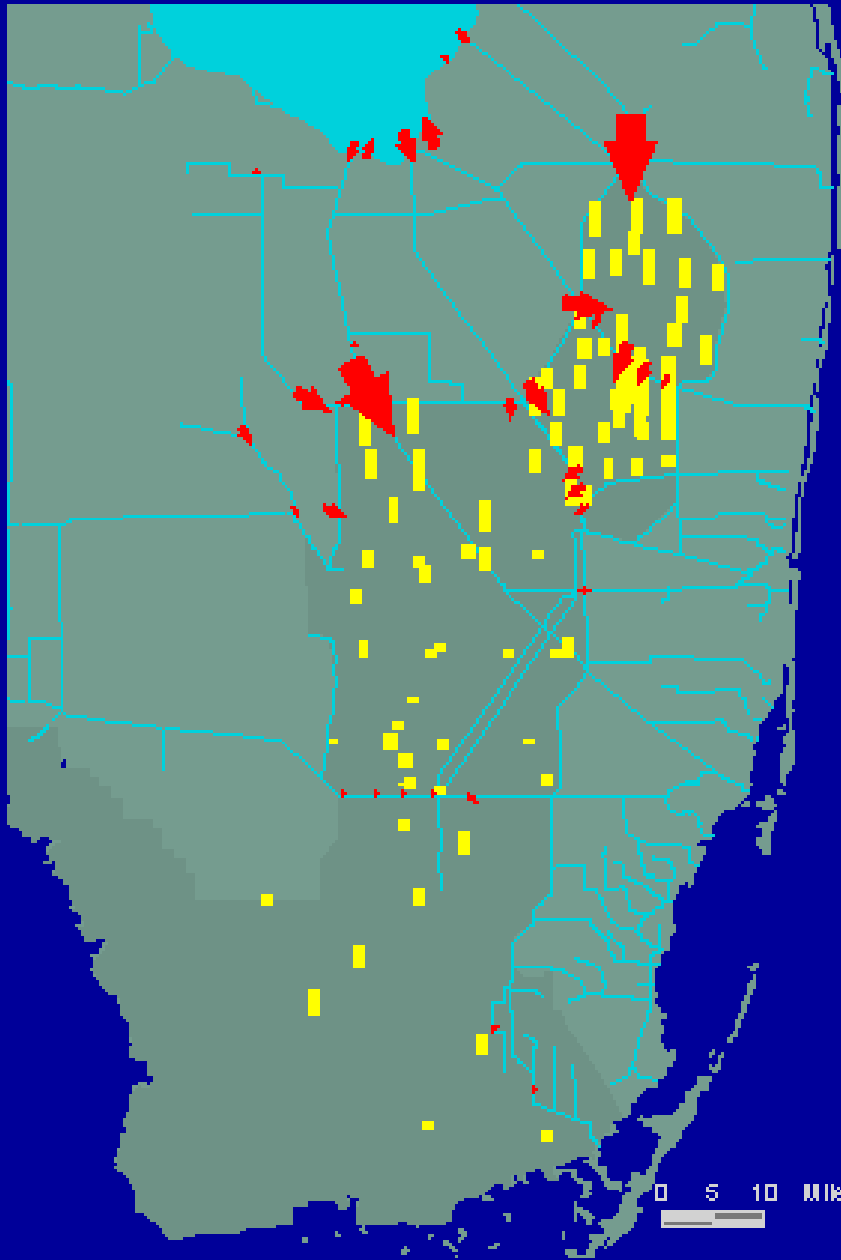
Structure Flows WY 1978 - 1991



Structure TP Loads WY 1978 - 1991

Flow-Weighted-Mean P Concentrations Water Years 1978-1991 vs. 1992-1996





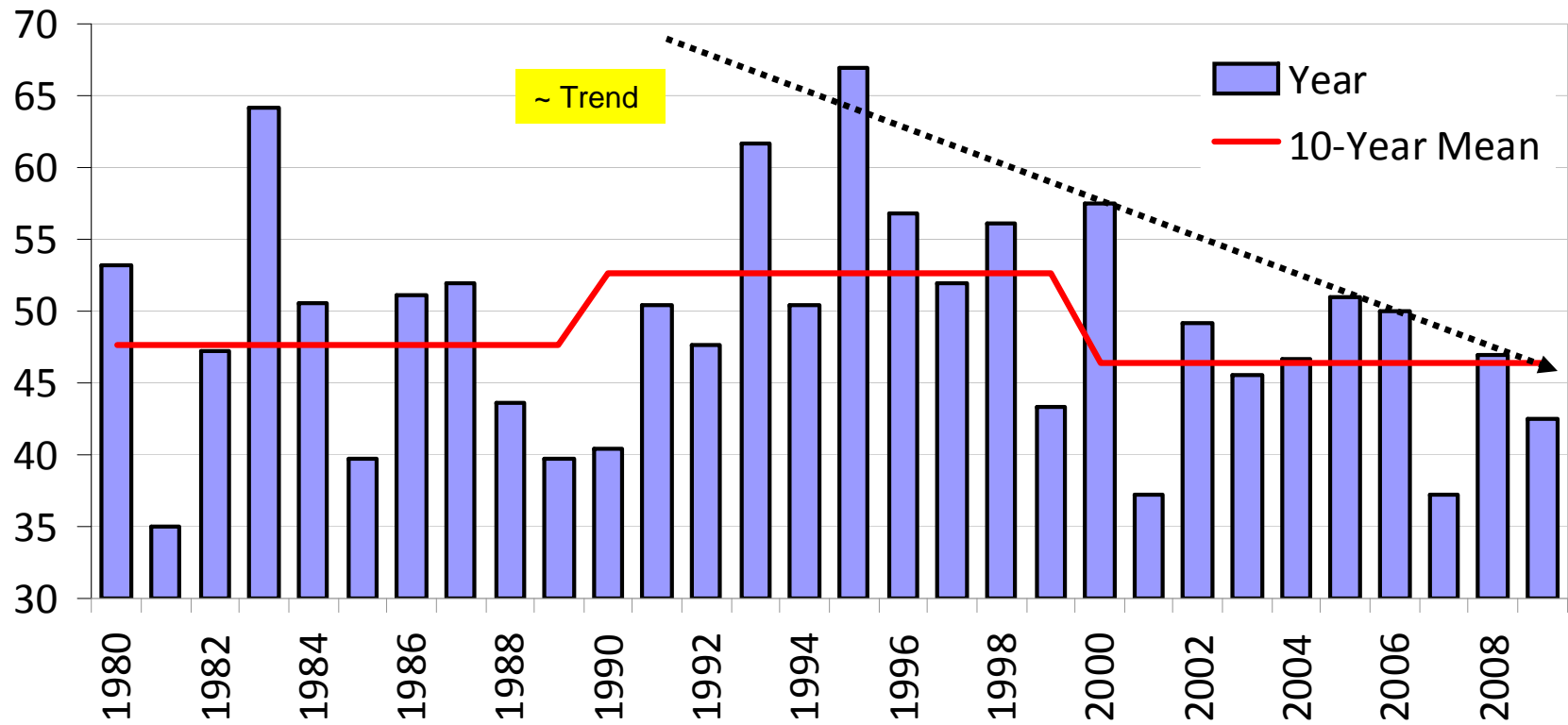
Structure TP Loads

&

Marsh Frequencies
TP > 10 ppb

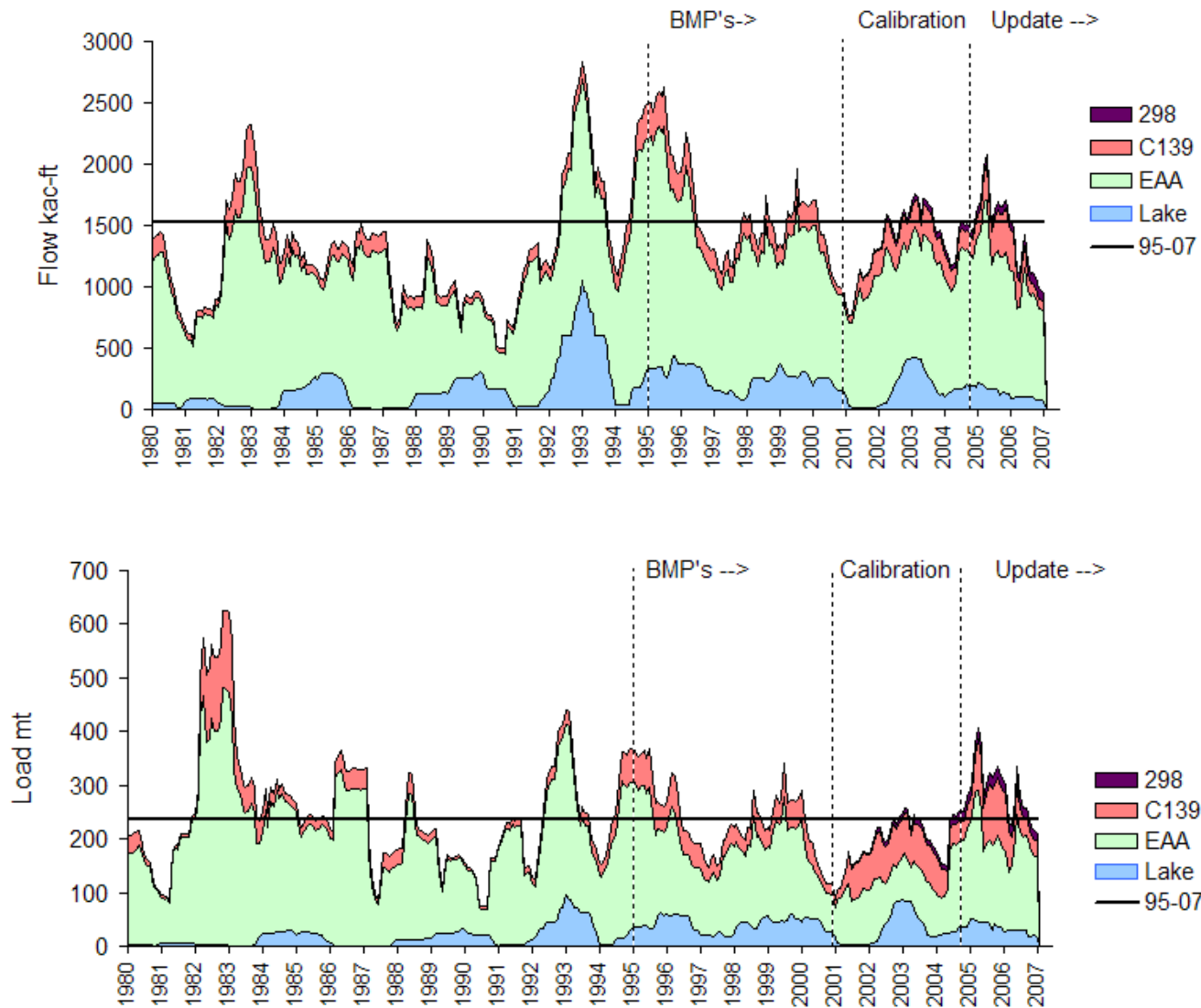
WY 1978 - 1991

EAA Rainfall, 1980-2008



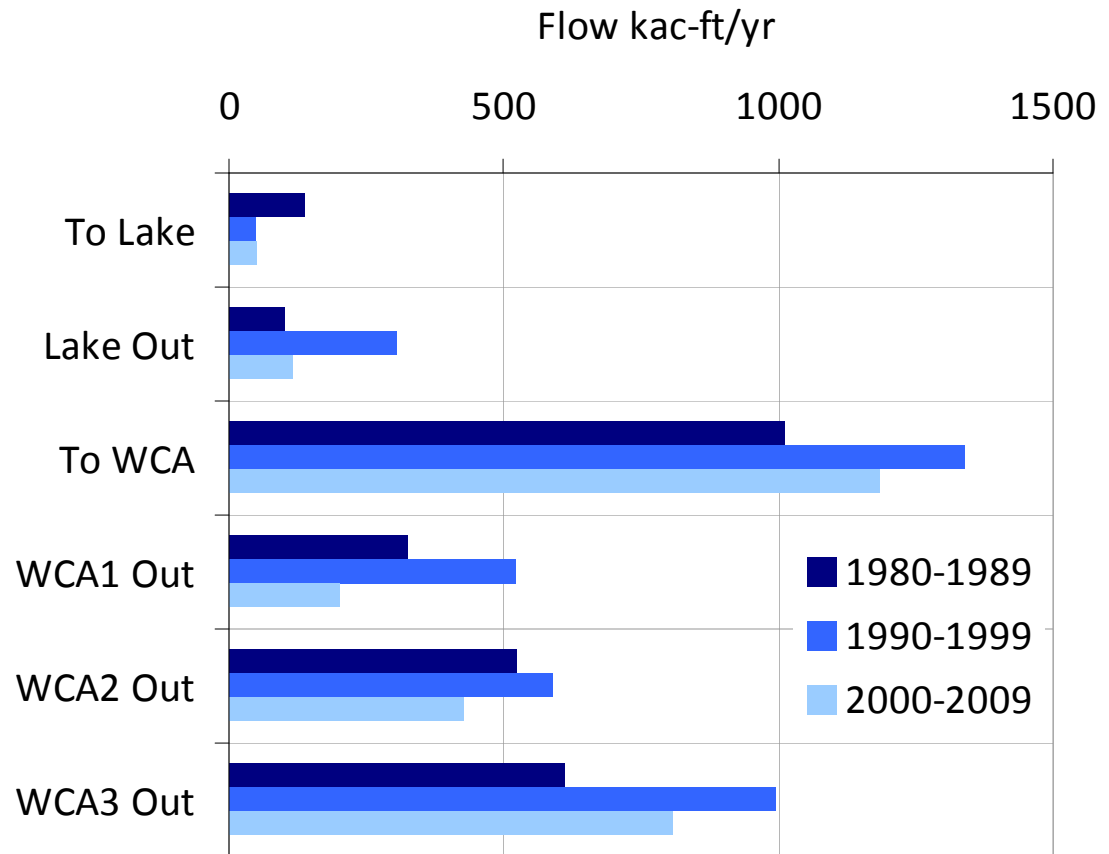
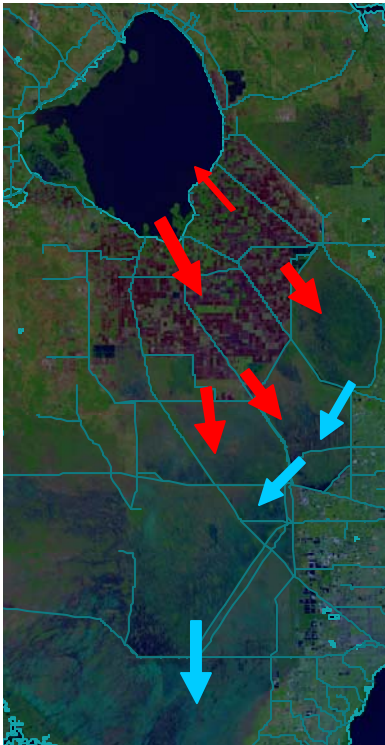
Source Flows & Loads, 1980-2007

12-Month Rolling Means



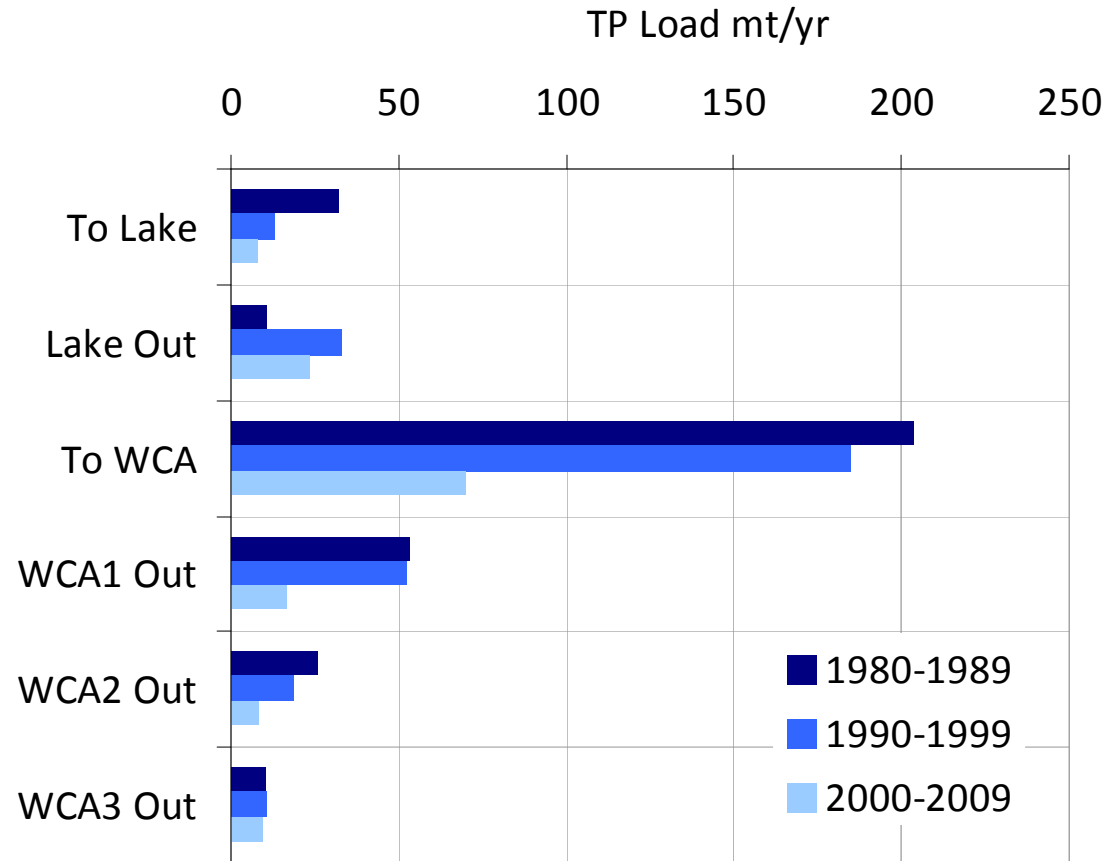
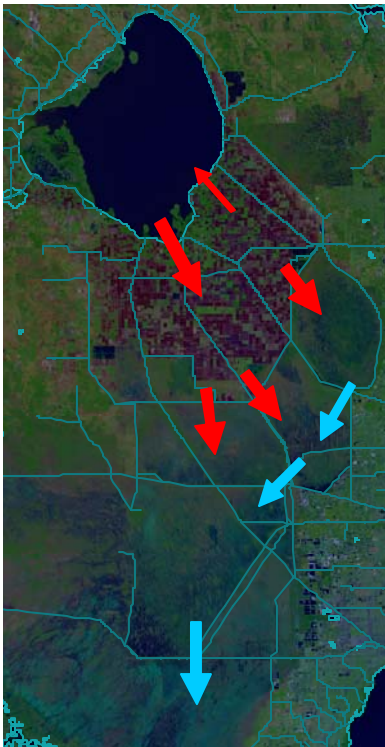
Flows: 1980-2009

10-Year Intervals



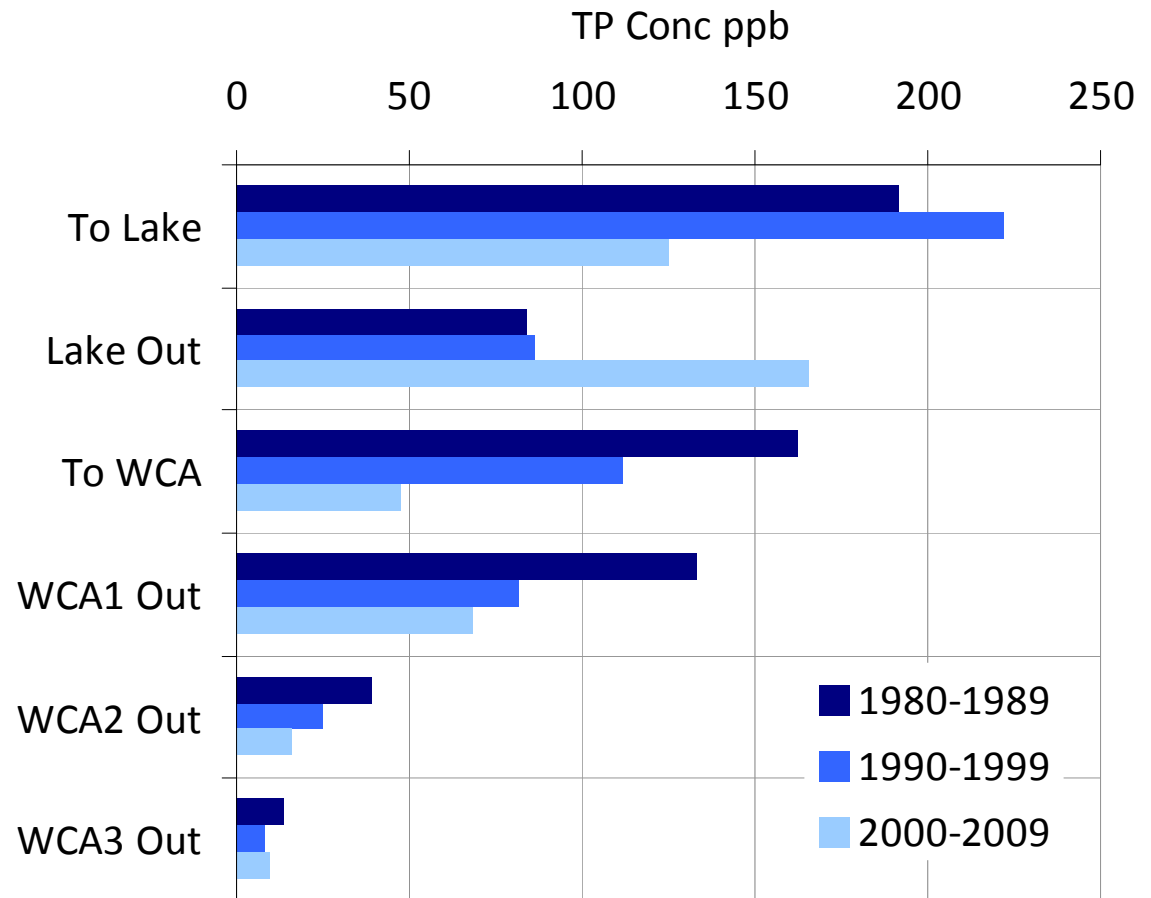
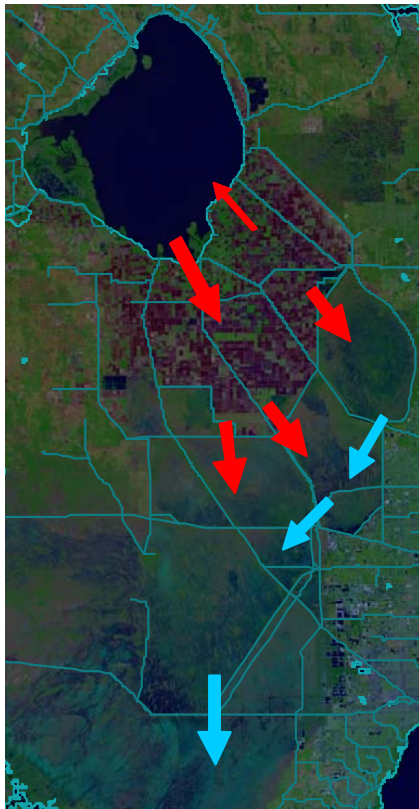
TP Loads: 1980-2009

10 Year Intervals

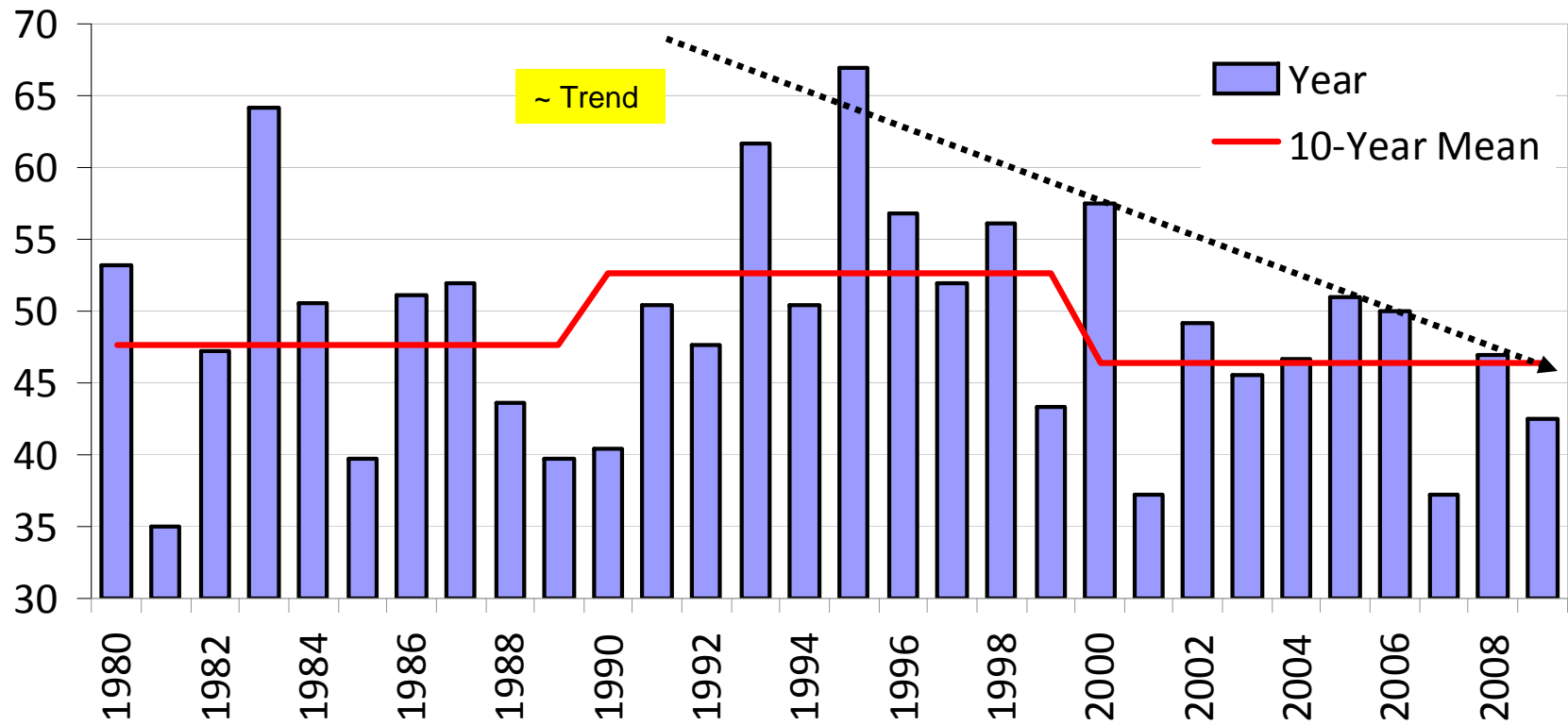


TP Concentrations: 1980-2009

10-Year Intervals

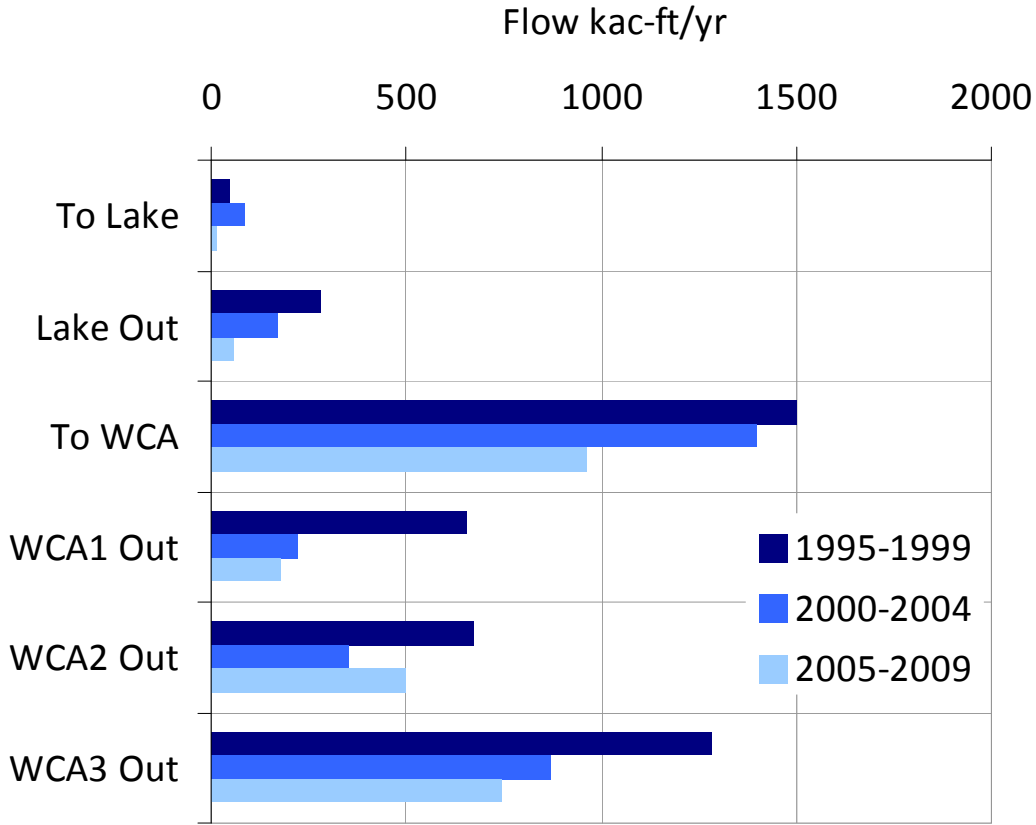
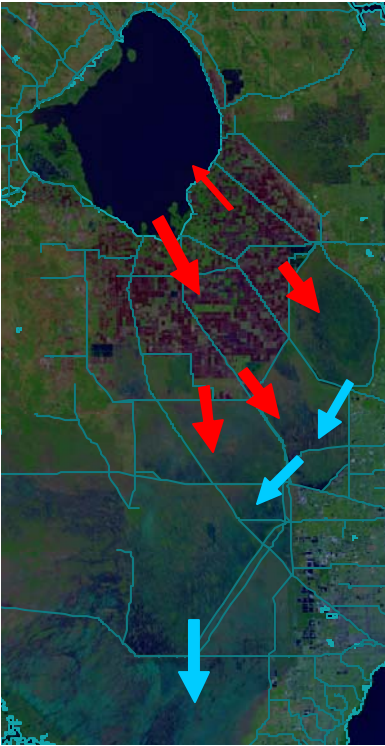


EAA Rainfall, 1980-2008



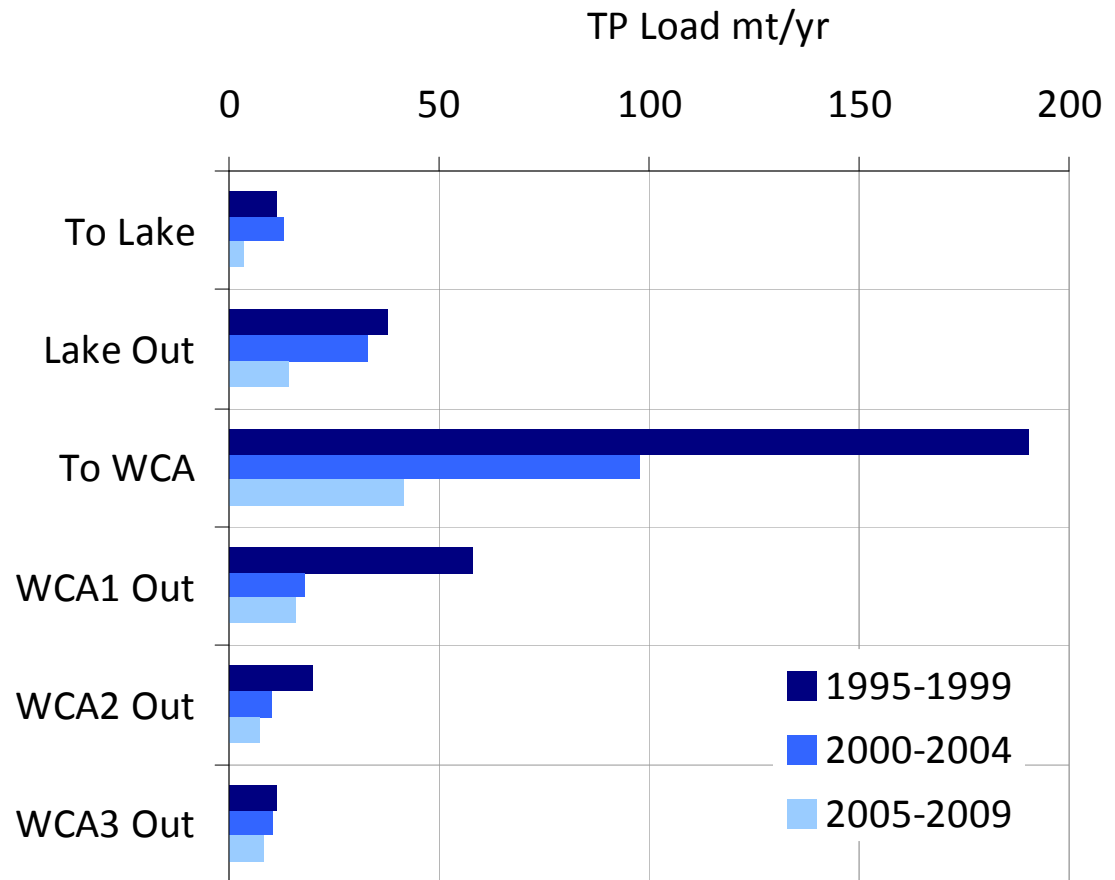
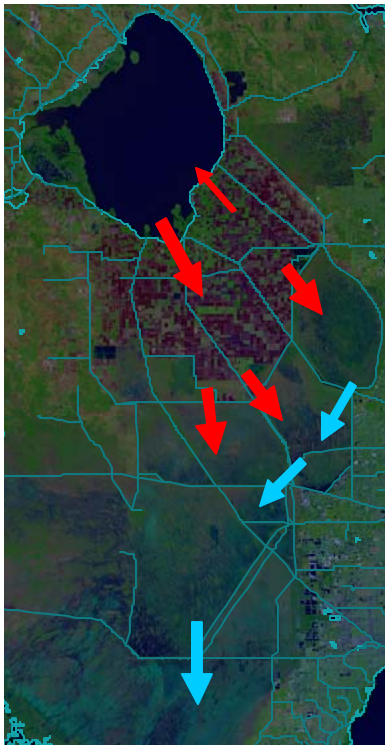
Flows: 1995–2009

5-Year Intervals



TP Loads 1995-2009

5-Year Intervals



TP Concentrations: 1995-2009

5-Year Intervals

